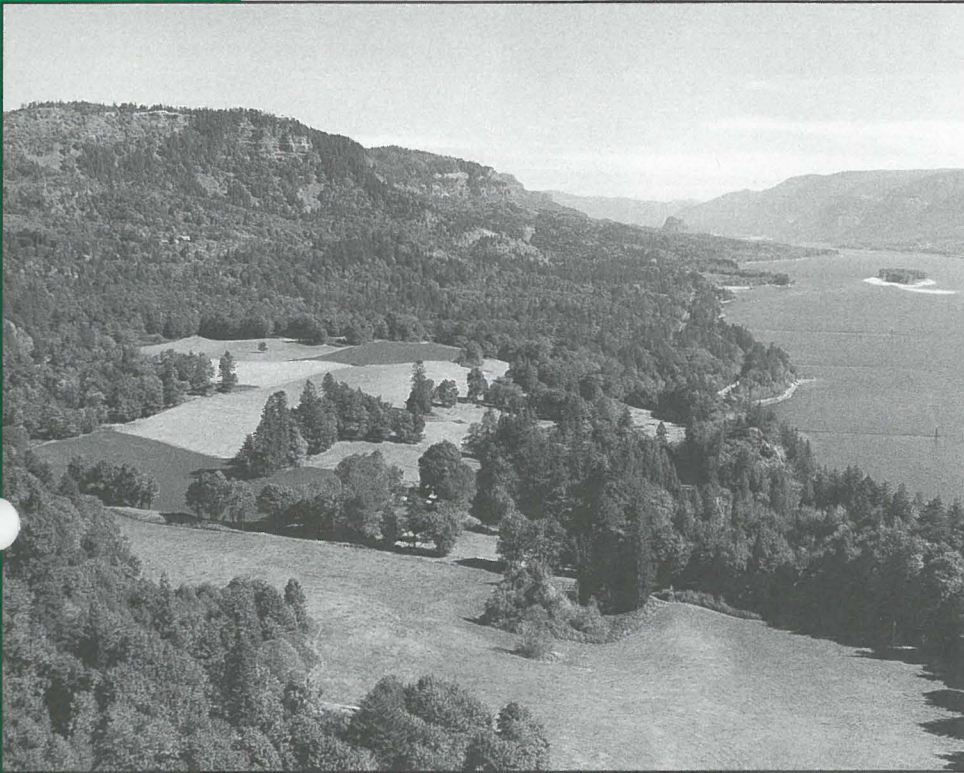


FRIENDS OF THE COLUMBIA GORGE

February 1997 Newsletter



Friends' October 1996 newsletter alerted members to the threat to the Cape Horn, WA, landscape. In response to overwhelming public demand, the Forest Service has taken steps to purchase two Cape Horn-area properties offered for sale. Yet thousands of acres are still at risk through a Gorge Act loophole being exploited by opponents of Gorge protection.

photo by Michael Lang

Cape Horn May Gain Partial Protection

Thousands of Acres Still at Risk

Thanks to a letter-writing campaign combined with Friends' staff analysis of draft Forest Service decisions, it appears that inappropriate clearcutting and development of three parcels of land on Lower Cape Horn may be avoided. The Forest Service has announced that it intends to purchase the Ward and Bea parcels. The Danson parcel may gain protection through a private purchase for conservation purposes. Together, this would conserve a 160-acre block of pristine low-elevation forest, the pastoral views from Cape Horn, and provide additional public recreation opportunities.

But the battle to protect some of the most special natural, cultural and scenic resources in the Gorge has just begun. Ward, Bea and Danson are just the first of more than 40 "Special Management Area" properties offered for sale to the Forest Service. If the Forest Service fails to buy the land within three years, the land becomes open to clearcutting and development. As early as May, 1997, hundreds of acres of sensitive land may be lost forever to development, including rare oak

woodlands near Catherine Creek and farm and forest land in the Mt. Pleasant and Cape Horn areas across from Crown Point.

One of Friends' top priorities for 1997 is to find alternative sources of funding to protect these lands, strengthen the Forest Service's policies for these lands, and develop alternative protection strategies.

What You Can Do

Let Congress and the Forest Service know that permanent protection and public access for Gorge landscapes is important to you. Ask the Forest Service to acquire more public land in the Gorge:

Arthur Carroll, Manager, Columbia River Gorge National Scenic Area, U.S. Forest Service, 902 Wasco St., Suite 200, Hood River, OR 97031. Please send a copy of your letter to Friends of the Columbia Gorge.

We are also looking for volunteers to help with research and advocacy on this important issue. To volunteer, or for more information, contact Michael Lang, Conservation Director, (503) 241-3762. ■

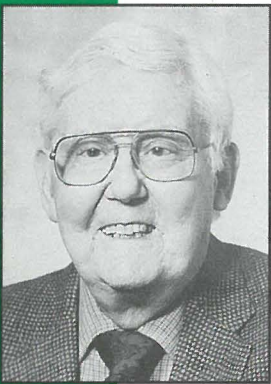
Executive Director's Letter

As we begin a new year and reflect upon the past year, I am reminded that the Columbia Gorge is more than a beautiful landscape. It's a place that brings people together, and inspires great works of art, culture, history, science, and so much more.

One of the people inspired by the Gorge spent much of his life inspiring other people. Nancy Russell remembers Dr. John Eliot Allen and what he brought to all of us. From all of us who treasure the Columbia Gorge: Thank you, Dr. Allen. You are missed.

Lauri Aunan

Lauri Aunan
Executive Director



Dr. John Eliot Allen, eminent Oregon geologist

The Columbia River Gorge lost a wonderful and passionate friend with the passing of Columbia Gorge geologist Dr. John Eliot Allen on December 17, 1996. He was 88. Dr. Allen, founder of the Geology Department at Portland State University, had a dynamic personality that combined all the enthusiasm of youth with the thoughtful scholarship of a mature scientist. He was a communicator par excellence and for many years a most effective supporter of the Columbia Gorge National Scenic Area.

In 1979, Dr. Allen's *The Magnificent Gateway: a Layman's Guide to the Geology of the Columbia River Gorge* was published by Timber Press. In the preface to this book, he mentioned how he became involved in the Gorge:

"During the summer of 1931 11 seniors and graduate students under Dr. E.T. Hodge of the University of Oregon camped in the Columbia River Gorge and around Mt. Hood, and for 14 weeks, seven days a week, mapped the geology of more than 2,000 square miles north and south of the river between Hood River and Troutdale. I was one of that crew and spent the ensuing year compiling and plotting the information gained by the party."

I met Dr. Allen in May 1981 when he was Professor Emeritus of Geology at Portland State University. He was on the faculty of the "Short Course on the Columbia," a fabulous two-day bus and boat tour of the Gorge with such legendary Gorge savants as Ivan Donaldson and Ruth and Emory Strong. What great resources these people were! One just breathed in and soaked up history, geology, fisheries and scenery.

For many years Dr. Allen took his Portland State students on tours up the Gorge. Later, he took up bus tours for the PSU Alumni Association. Our last trip was two years ago when Dave Olson and I took him on an all-day scenic Gorge tour. We visited all his old geologic friends — turrets, cliffs, waterfalls, synclines, anticlines, volcanoes, and Troutdale and Eagle Creek formations — east and west and up and down. I don't think his enthusiasm had dimmed since 1931.

In my files I have a letter from one of his former students, Barbara Holmberg-Mostovoy, who wrote of Dr. Allen: "He is a 'magnificent gateway' to learning for many of us, a local treasure only slightly overshadowed by his beloved Columbia Gorge." I think she got it just right.

Nancy N. Russell

Other books by John Eliot Allen

Cataclysms on the Columbia, 1986, with Marjorie Burns and Sam C. Sargent
Hiking Oregon's Geology, 1996, co-written with Ellen Morris Bishop
Bin Rock and Dump Rock, the memoirs of Dr. Allen, published in 1997 by the Hells Canyon Press, Halfway, Oregon, (503) 742-7900.

Gorge Watch

Citizen Involvement Update



Gorge Watch - The Network

With assistance from ONE Northwest, we are developing the Gorge Watch e-mail network to encourage greater public involvement, communication and collaboration for the Gorge region. The project has great community support and the "mailing list" is beginning to take shape. ■

Kitchen Tables and Eye Openers!

Friends will soon kickoff a series of "kitchen table" meetings, where people will meet informally to discuss issues and, when appropriate, write letters to decision makers. Friends will also facilitate morning meetings — "Eye Openers" — to bring decision makers and concerned citizens together in an informal setting. "These programs are great ways to share ideas, concerns and new perspectives," said Kristin Reese, Friends Outreach Director. "We hope these meetings will encourage public involvement in Gorge communities." ■

Legislative Alert!

Senate Bill 5038, introduced by Senator Don Benton (R-17), takes aim at the Scenic Area and Gorge Commission. The anti-Gorge protection bill would require inappropriate development in the Scenic Area, or slash the Gorge Commission's budget to zero. **Washington members should contact their legislators and the Senate Government Operations Committee, and urge them to oppose SB 5038.** Committee members: Senators Bob McCaslin (chair), Patricia Hale

(vice chair), Ann Anderson, Jim Horn, Mary Margaret Haugen, Ken Jacobsen, and Julia Patterson. Send all letters to: Senator [name] P.O. Box 40482, Olympia, WA 98504-0482. Please send a copy of your letter to Friends. ■

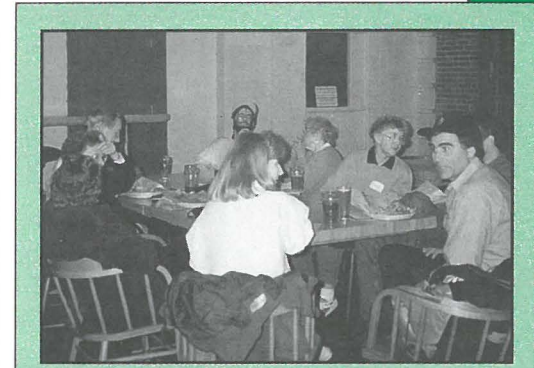
Gorge Commission Limits Public Involvement in Monitoring Program

One year ago, the Gorge Commission voted to move forward with a monitoring program as the first step in review of the Scenic Area Management Plan. Friends strongly supported this decision. The Gorge Commission is required by law to monitor how Gorge protection laws are working, yet there is almost no objective data on whether Gorge resources are really being protected.

The monitoring program provides a great opportunity to increase public involvement and understanding of the Management Plan. Yet despite a good start last October, when citizens were invited to public workshops, the Commission staff has limited meaningful public participation. Members of the public and Gorge environmental groups were excluded from recent monitoring meetings. Friends' requests to attend the meetings were denied by Commission staff.

Friends believes all interested citizens and groups should be allowed to provide information and recommendations for development of monitoring. You can ask the Gorge Commission to support meaningful public participation in monitoring and plan review by writing to: Bob Thompson, Chairman, Columbia River Gorge Commission, P.O. Box 730, White Salmon, WA 98672. If you send a copy of your letter to Friends, we will make sure that the Gorge

Commission member from your county and state also receives a copy. ■



Friends volunteers enjoy an evening's pizza and beverages at the Bridgeport Brew Pub, sponsored by Friends in appreciation of our great volunteers. photo by Hannah Davidson

Volunteers Save the Day Again

Many thanks to Chris Watson and Cristi Bozora for their on-going help with legal research. Thanks also to Michael Coutu for legal research assistance. Special thanks to John Willey for assistance with our zip drive and databases! Loretta Johnston deserves high praise for hours of data entry and consultation on database applications. Last, but definitely not least, very many thanks to Ken Sadler for hours of work producing a beautiful Friends Web Page. For more information on the Web Page, see page 7. ■

For more information on any of the above projects: contact Kristin at 503-241-3762 or focg@teleport.com.

Senator Hatfield, Gorge Officials Dedicate Mosier Twin Tunnels

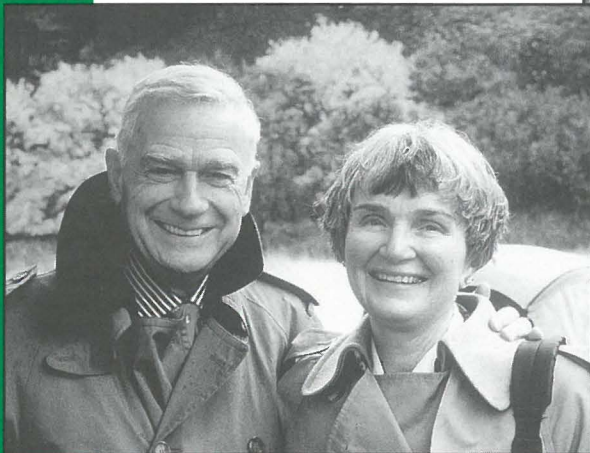
New Trail Scheduled to Open Mid-1997

"We are the stewards of this area and this is the restoration of a historic part of the state. We are the stewards of the present by making this available to people now. We are the stewards of the future, because we are protecting the gorge assets – this wonderful, great, God-created part of the world for future generations for all time to come."

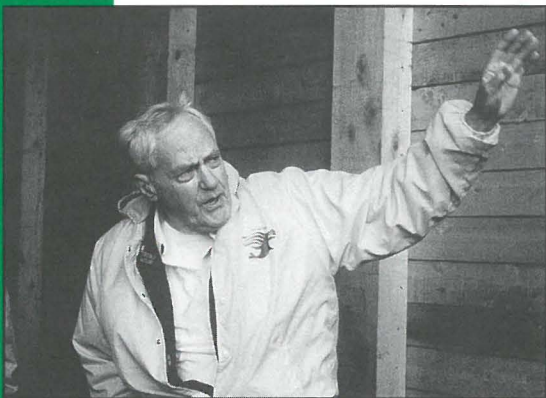
Senator Mark O. Hatfield
November 4, 1996, dedication of
the Mosier Twin Tunnels



Senator Hatfield tours the Mosier Twin Tunnels in an antique automobile. When fully completed, this section of the Historic Highway will provide a 6-mile trail from Hood River to Mosier for hikers, bicyclists and people in wheelchairs, with antique car rallies allowed by special permit.



Senator Mark O. Hatfield and Friends' Chair Emeritus Nancy Russell enjoy the fulfillment of a long-time dream: restoration of the historic Mosier Twin Tunnels.



Lewis McArthur, Chairman of the Historic Columbia River Highway Advisory Committee and advocate for Oregon's history, points out details of the Tunnels' interior restoration.

photos by Lauri Aunan

Senator Gordon Smith Promises to Support National Scenic Area

In a speech to the City Club of Portland in December, Senator Gordon Smith drew loud applause when he promised to oppose efforts to roll back federal protection for the Columbia Gorge, and work to find ways to continue federal funding for important Gorge Act programs such as economic development, recreation and public lands. Senator Smith spoke about the special nature of the Columbia Gorge — a place deserving of special protection.

Please call or write Senator Smith to thank him for his support and ask him to fulfill his promise:

Senator Gordon Smith
United States Senate -
Dirksen Building
Washington D.C. 20510
(202) 224-3753

Senator Gordon Smith
1220 SW Third, Suite 618
Portland, OR 97204
(503) 326-3386

Friends' 1997 Spring Wildflower Hikes

What: Saturday day hikes follow the wildflower bloom as it unfolds in the Gorge. Hikers should be in good physical condition and prepared for the weather. Hikes will not set speed records; our pace will promote awareness and appreciation of the beautiful Columbia River Gorge.

Where: Carpools depart at 8:00 am from Gateway/99th Ave. Park & Ride (SE corner), I-84 Exit 7, immediate right onto 99th Ave., Portland. Second meeting places listed below for persons living east of Portland.

What to Bring: Daypack containing lunch, water, rain gear, extra clothing, insect repellent, first aid kit, camera, binoculars. No alcohol, drugs, firearms or pets. Many hikers bring

Russ Jolley's field guide, *Wildflowers of the Columbia Gorge*.

What to Wear: Long sleeves, long pants, lug-soled waterproof hiking boots recommended. Bring coat, gloves and cap.

Carpooling will be arranged among participants at Gateway/99th Ave. Park & Ride. Donation to drivers of 5 cents per mile. Bridge tolls (75 cents each way) are shared.

General Information: Prior sign-up is not necessary. Hikes will not be canceled because of rain (weather tends to be drier east of Hood River). Participants accept responsibility for their own safety. All mileages given are round trip.

For additional information, contact Friends of the Columbia Gorge, (503) 241-3762.

March 29 - Tom McCall Preserve

Hiking enthusiast Heather Rosenwinkel will lead us out on Rowena Plateau to the vernal ponds and up to Tom McCall Point past wildflower slopes and breath-taking views. Hike 6 miles, 1250 feet elevation gain. 2nd meeting place: 9:30 am, Rowena Turnaround on Scenic Highway, I-84 exit 69 (Mosier) then east 7 miles.

April 5 - Catherine Creek-East

Follow wildflower expert Barbara Robinson past the natural arch up to the open plateau with wide-ranging views, then descend through wildflower meadows. Hike 6 miles, 1,000 feet elevation gain. 2nd meeting place: 9:30 am, Bridge Mart, just east of the Washington end of Hood River Bridge.

April 12 - Lyle Cherry Orchard

Friends' Chair Emeritus Nancy Russell will lead us through a series of benches, gaining 1,000 feet in the first mile, to the wind-swept, flower-studded plateau and a deserted cherry orchard. Hike 4 miles, 1,400 feet elevation gain. 2nd meeting place: 9:30 am, Bridge Mart, just east of the Washington end of Hood River Bridge.

April 19 - Dalles

Mountain State Park

Hiking enthusiast Bill Daniels and former Dalles Mountain Ranch owner Pat Bleakney guide us through stunning wildflower meadows. Hike 7 miles, minimal elevation gain, 1,000 feet elevation loss. 2nd meeting place:

9:45 am, Horsethief Lake State Park day-use area. I-84 exit 87, north on Hwy. 197 for 3 miles, east on Hwy. 14 for 1.5 miles.

April 26 - Memaloose Hills

Wildflower expert Nancy Russell will lead us to views and wildflower meadows in the Memaloose-Rowena area. Hike 5-6 miles, 800 feet elevation gain. 2nd meeting place: 9:15 am, Memaloose Rest Area, south side of I-84 eastbound, exit 72.

May 3 - Deschutes River Trails

Follow Desert Trail Association's Ross and Jenna Edgington up to Ferry Springs for terrific views in a high desert setting; return on riverside trail past historic sites. Hike 8 miles, 750 feet elevation gain. 2nd meeting place: 9:45 am, Deschutes River State Park, I-84 exit 97 (Celilo), then 4 miles east.

May 10 - Angels Rest

Mazamas Billie Goodwin brings us to Angels Rest for a heavenly view of the western Gorge. Hike 4.5 miles, 1,400 feet elevation gain. 2nd meeting place: 8:30 am, Scenic Highway junction 1/4 mile from I-84 exit 28 (Bridal Veil).

May 17 - Weldon Wagon Trail

Gorge enthusiast Ray Hayden takes us along a pioneer route through open wildflower slopes with views of the idyllic White Salmon River Valley. Hike 7.5 miles, 1,500 feet elevation gain. 2nd meeting place: 9:15 am, White Water Market, east side of Hwy. 141, Husum, Washington.

May 24 - Wahkeena & Multnomah Falls Loop

Follow Gorge photographer Ken Denis along Multnomah Creek; descend past the cascades of Wahkeena Creek. Hike 6 miles, 1,650 feet elevation gain. 2nd meeting place: 8:45 am, drinking fountain in front of Multnomah Falls Lodge.

May 31 - Dog Mountain Loop

Trails Club of Oregon's Fay Akerson will lead us to the balsamroot-filled slopes of this Gorge classic to enjoy the expansive views. Hike 7 miles, 2,900 feet elevation gain. 2nd meeting place: 9:15 am, trailhead parking lot on Hwy. 14, 12.5 miles east of Bridge of the Gods.

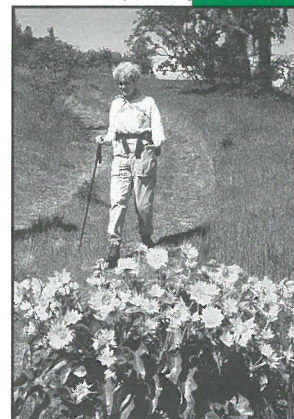
June 7 - Hamilton Mountain Loop

Mazamas Richard Getgen will lead this hike during its prime wildflower-blooming period past waterfalls, rock outcroppings, and far-ranging views. Hike 9 miles, 2,200 feet elevation gain. 2nd meeting place: 9:30 am, trailhead parking area, Beacon Rock State Park 1/8 mile north of Hwy. 14.

June 14-15 - 17th Annual Gorge Hiking Weekend

Brochure will be available from Friends by May 15th. ■

photo by Ken Denis



Friends' Cruise a Great Success

Let's Cruise and Cruise Again!

by Nancy Russell

Longtime Friends supporter Kate Mills deserves all our thanks for the inspiration and support that brought us the Special Expeditions Columbia River Cruise. In celebration of the 10th Anniversary of the Columbia Gorge National Scenic Area, 76 Friends members and supporters cruised the Gorge in October 1996. Our happy travelers praised the considerate and capable crew, the interesting information from knowledgeable and inspirational people, old friendships renewed, and the delicious food. No one summed it up better than our longtime member Bunny Jubitz:

"The stimulating

lectures, tapes, and excursions were outstanding and the pervading feeling of fellowship was heartwarming. I felt such a letdown when it was over. Good times come to an end, but, thank goodness, memories don't."

We thought this experience was well worth repeating, and subscribed



Gifford photo, FOCG collection

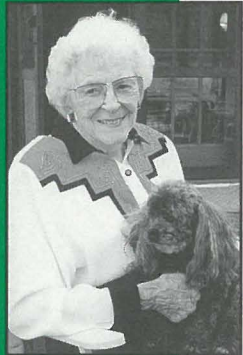
The Regulator near Castle [Beacon] Rock.

to a block of cabins for the May 7, 1997 voyage. Our tickets have all been sold — in fact, not one place remains for any of the May 1997 trips. Obviously, the Columbia River cruise is very popular in both the fall and spring. ■

Sign up for May '98!

Friends has signed up for another block of rooms for a May 9, 1998 Departure Date (a wonderful Mother's Day voyage!). We have again asked Tom McAllister to be our special tour guide. Later this year we'll be sending you a brochure with information about the 1998 trip up the Gorge and into the Snake River and Hells Canyon.

If you are interested in the 1998 cruise, call Nancy Russell at (503) 292-8518.



Some Progress in Washington State Forest Protection Negotiations

Special Management Area Guidelines Still Not Implemented

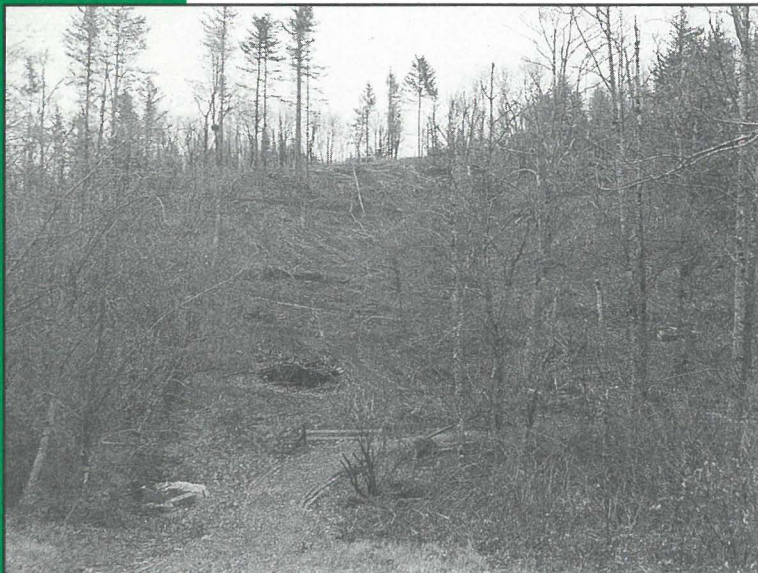
Representatives of Washington State agencies, the Gorge Commission, Forest Service, Skamania County, timber companies and conservation groups, including Friends, have been meeting to see if agreement can be reached on who will implement Special Management Area forest protection guidelines. To date, Oregon, Washington, and the Gorge Commission have all refused to implement

This Gorge timber harvest violated Scenic Area guidelines, but complied with less-stringent state rules — illustrating the need for enforcement of Scenic Area standards.

photo by Michael Lang

the guidelines, and the Washington Department of Natural Resources (DNR) has issued timber harvest permits that violate the Gorge Act. Friends supports either the Commission or the states as implementor of the guidelines, as long as the law is strictly enforced and Scenic Area resources are protected. *However, Friends believes that the Gorge Commission is ultimately responsible for implementation and enforcement of forest protection guidelines.*

There is potential for consensus around the following proposal for Washington state: the DNR would issue permits; the Forest Service provide technical assistance; and the Commission and DNR would share enforcement. Negotiations will continue this month to determine if consensus can be reached. ■



Friends News...

Friends Annual Meeting March 9, 1997 Join Us at Skamania Lodge

by Nancy N. Russell

Friends will hold its 1997 Annual Meeting on Sunday, March 9, 1997, at 1:30 p.m. at Skamania Lodge, Stevenson, Washington. After official business, our meeting will feature "Wildflower Cousins in Grandmother's House," a 25-minute multi-media extravaganza with text by poet Kim Stafford. Stafford's powerful text and the lovely original music score enhance breathtaking photos of Gorge plants and scenery. Suzi Lewis, Scenic Area Interpretive Specialist, will present this stunning slide show and update us on other interpretive projects in the Scenic Area, including the Discovery Center in The Dalles and the new signage along the old Scenic Highway. Mark your calendars now and join us on March 9! ■

Friends on the World Wide Web

by Ken Sadler

Friends of the Columbia Gorge is now on the World Wide Web. Our web page covers the past as well as the present, with a few thoughts of the future. We have been fortunate in getting free space on the Europa Communications Internet Server and fine cooperation from the Oregon Historical Society and a number of photographers, listed on the cover page. If you have a computer connected to the World Wide Web, you can reach our Page at <http://www.europa.com/~kbsadler/ColumbiaGorge.html>.

We plan to change parts of the Web Page every couple of months, and we invite other Gorge enthusiasts to add to the Page. Send photos or notes about interesting things you have done in the Gorge to Ken Sadler, 75 NW 90th Ave., Portland, OR 97229. If they are photos that you treasure, we will



Shooting Star

scan them, taking special care, and return them immediately. If you have any questions, call Ken at 292-1854.

With your help we will make sure the world knows about the great Columbia River Gorge! ■

Thank You!

Many thanks to Friends member Leroy Jensen for his donation of *Oregon's Famous Columbia River Highway*. This lovely early 1900s pictorial will be a treasured part of Friends' Gorge collection. ■

Special Price on 1997 Columbia Gorge Calendars

Once again, Craig Tuttle has produced a calendar full of the sights that can only be seen in the Columbia Gorge. A limited number are available for only \$5 plus a \$2 postage and handling fee. To order, send your check for \$7 to Friends of the Columbia Gorge, 319 SW Washington, Portland, OR 97204, or call Marna at (503) 241-3762. ■



319 SW Washington St., #301
Portland, Oregon 97204
(503) 241-3762

E-mail: focg@teleport.com

World Wide Web:

<http://www.europa.com/~kbsadler/ColumbiaGorge.html>

Mission Statement

Friends of the Columbia Gorge shall vigorously protect the scenic, natural and cultural resources within the Columbia River Gorge National Scenic Area.

We fulfill this mission by ensuring strict implementation of the National Scenic Area Act; promoting responsible stewardship of Gorge lands and waters; encouraging public ownership of sensitive areas; educating the public about the unique natural values of the Columbia River Gorge and the importance of preserving those values; and working with groups and individuals to accomplish mutual preservation goals. —Adopted February 3, 1994

Board of Directors

Rick Ray*, *Chairman*
Nancy N. Russell, *Chairman Emeritus*
John Reynolds, *Vice Chairman*
Michael P. Ryan, *Treasurer*
Jeanne Norton, *Secretary*
William Bell*
Broughton H. Bishop
Bowen Blair, Jr.
Ken Denis
Spencer Dick
Julia Ferreira
Richard Getgen
Sherry R. Grove*
Elmer Lierman*
Kate McCarthy*
Len Swenson*

* Gorge residents

Staff

Executive Director: Lauri Aunan*
Bookkeeper/Office Assistant: Helen Ehelebe
Land Use Counsel: Gary K. Kahn
Conservation Director: Michael Lang
Development Assistant: Matthew Burke
Receptionist/Clerk: Marna Moore
Outreach Director: Kristin Reese
Land Use Intern: Andrea Tonn
* Gorge resident

Newsletter Contributors

Contributors: Lauri Aunan, Hannah Davidson, Ken Denis, Michael Lang, Kristin Reese, Nancy Russell, Ken Sadler
Editor and Layout: Kathleen Krushas

Memorial Contributions

Friends of the Columbia Gorge wishes to thank the following people who have made memorial contributions since our last newsletter:

*In memory of John Eliot Allen
Nancy N. Russell and David
and Maryellen Olson*

*In memory of Bonnie Buzgo
Diana Gordon and Anda-
Marina Selga*

*In memory of Frances Milne
Elizabeth B. Martin*

*In memory of Michael Zander
E.L. and Florence Zander*

Friends of the Columbia Gorge

P.O. Box 40820
Portland, Oregon 97240-0820

Address correction requested

Non Profit
U.S. Postage
PAID
Portland, OR
Permit No. 2623

Friends wishes to thank the following foundations for their very generous support in 1996

The Bullitt Foundation
Clark Foundation
Collins Foundation
Environmental Support Center
Hugh and Jane Ferguson Foundation
Jackson Foundation
W. Alton Jones Foundation
Konsgaard-Goldman Foundation
McGraw Family Foundation
Merrill Lynch & Co. Foundation
Meyer Memorial Trust
Morley Brothers Foundation
Northwest Fund for the Environment
Margaret Denison Fund of the
Oregon Community Foundation
John and Martha Marks Fund of the
Oregon Community Foundation
PGE Foundation
Portland Garden Club
Schnitzer Family Foundation
Ralph L. Smith Foundation
The Strong Foundation
Rose E. Tucker Charitable Trust

Gorge Calendar

Friends Adopt-A-Highway Litter Pickup

Saturday, March 22 (may be postponed due to weather) Help keep the Historic Columbia River Highway beautiful! For more information, call Marna, (503) 241-3762.

Columbia Gorge Commission Meetings

March 11 Waucoma Center, Hood River, Oregon

April 8 Columbia Gorge Community College,
The Dalles, Oregon

May 13 Waucoma Center, Hood River, Oregon

June 10 Skamania Lodge, Stevenson, Washington

The Gorge Commission needs to hear from interested citizens about protecting the Gorge. Meetings begin at 9:00 a.m. For more information call Kristin, (503) 241-3762

Three Perspectives-Columbia Gorge Art

June 14 - July 12, 1997, Stevenson Public Library
Stevenson, Washington, Monday - Saturday

Friends board member Ken Denis, Friends member Lisa Orley, and Linda Talent of Stevenson will present an art show of mixed media, watercolor, watercolor and ink, and photography.

For more information call Marna, (503) 241-3762